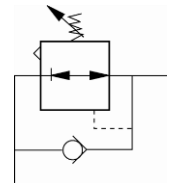
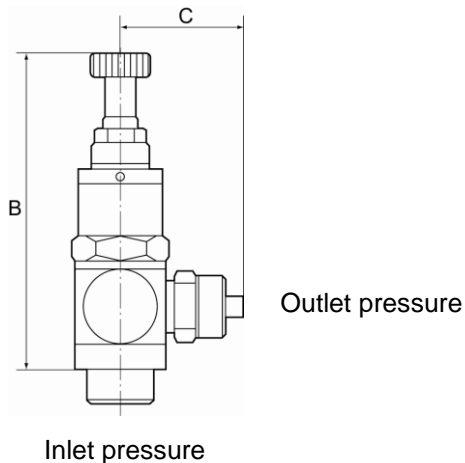


Piston pressure regulator with self-relieving design, hollow bolt and pivoting ring piece.

The regulator is connected directly into the consumer (e.g. cylinder, handling equipment, etc.). The working pressure can thus be adapted to the specific application.



Control range:	0 to 8 bar
Input pressure:	Max. 10 bar
Temperature range:	0 °C to +70 °C
Hollow bolt, pivoting arm, adjusting screw:	Nickel-plated brass
Valve trim:	Brass with a bare metal surface
O-rings and lip seal:	NBR
Captive seals:	Polyamide (glass fibre-reinforced)



362.014-6

Mini pressure regulators, discharge port on thread, screw connection

Art. No.	Type No.	Thread	Connection	a/f mm	B mm	C mm
107038	362.018-1/8	G 1/8	G 1/8 female thread	15	56.0	16.0

Mini pressure regulators, discharge port on thread, quick-lock screw fitting

Art. No.	Type No.	Thread	For pipe mm	a/f mm	B mm	C mm
107039	362.018-5	G 1/8	5/3	15	56.0	25.0
107040	362.018-6	G 1/8	6/4	15	56.0	25.0
107041	362.018-8	G 1/8	8/6	15	56.0	25.0
107042	362.014-6	G 1/4	6/4	17	63.0	26.5
107043	362.014-8	G 1/4	8/6	17	63.0	27.5
107044	362.014-10	G 1/4	10/8	17	63.0	28.5